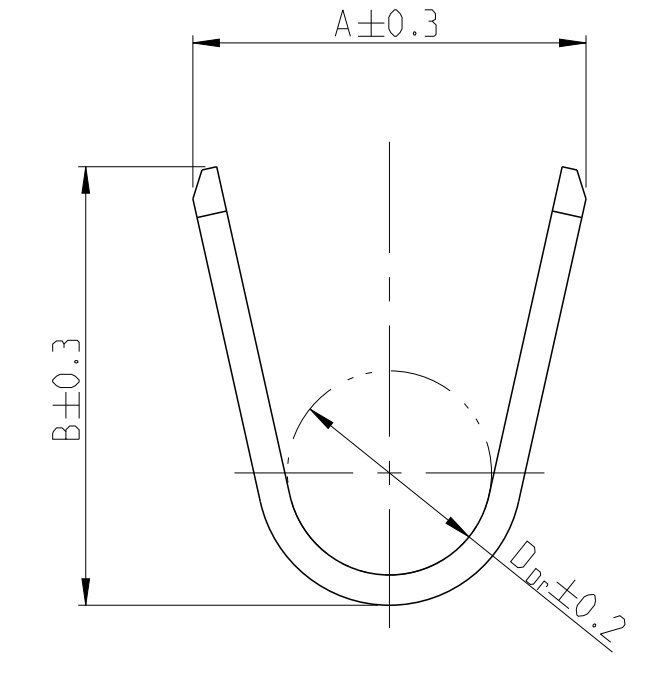
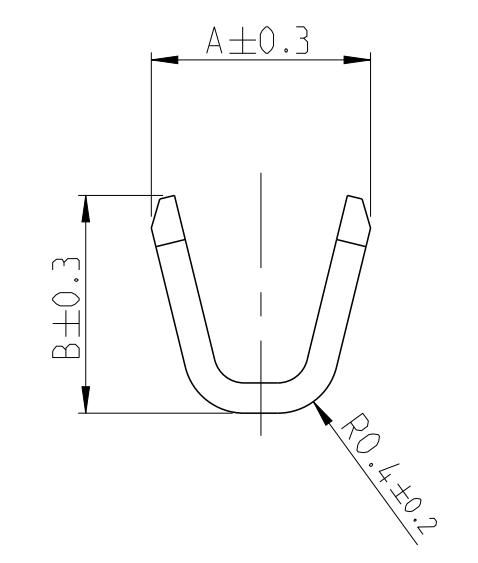
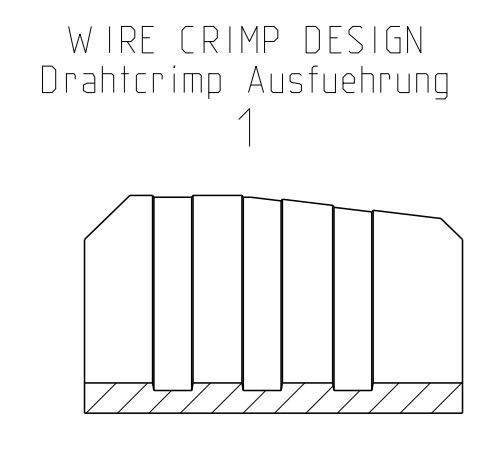
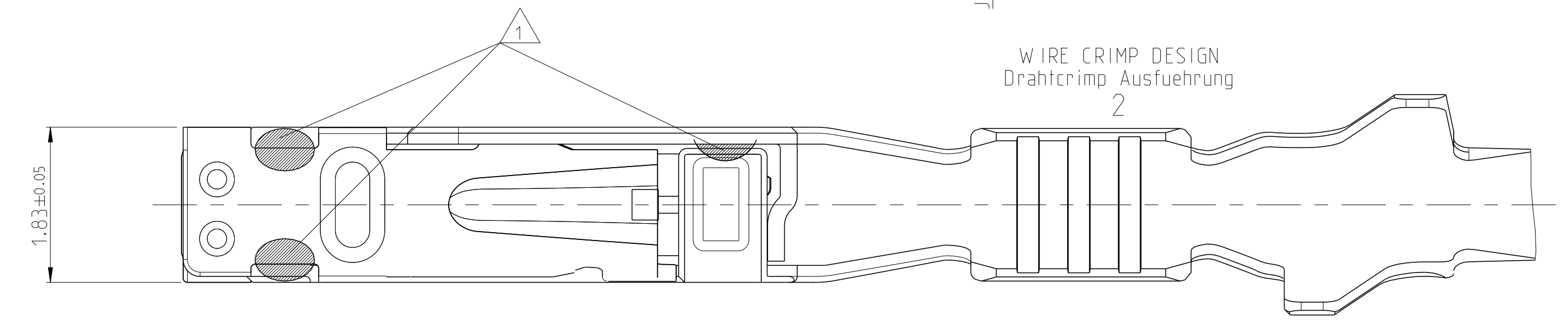
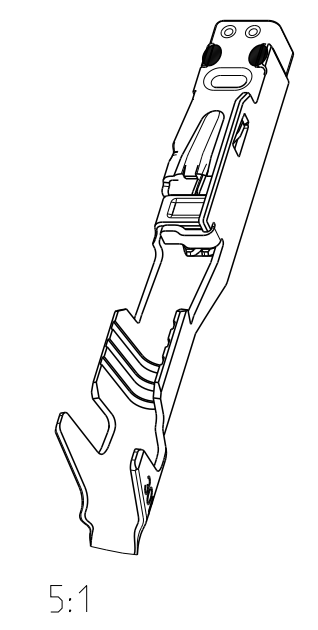
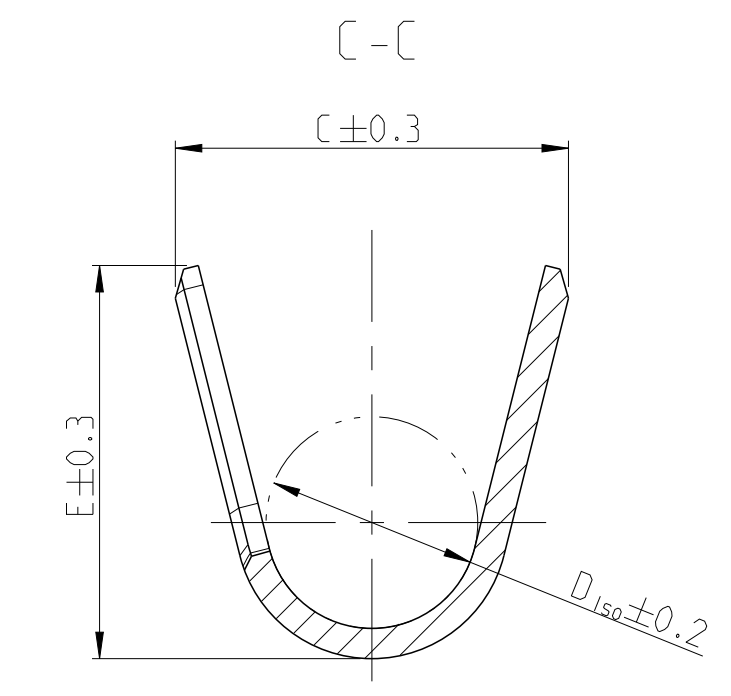
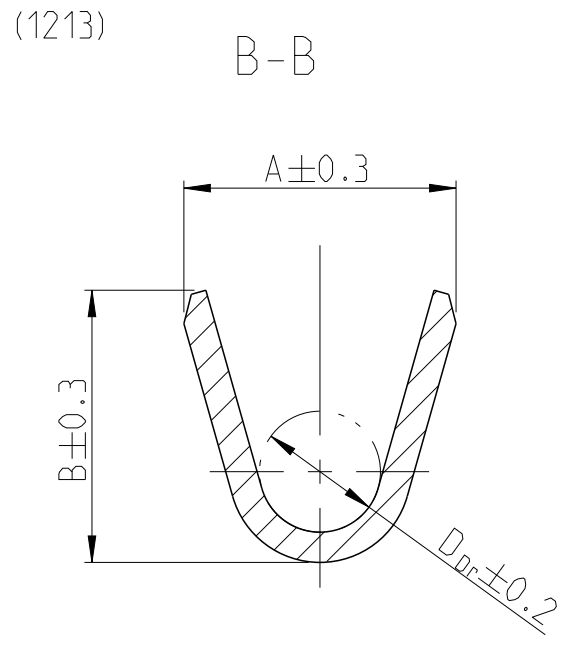
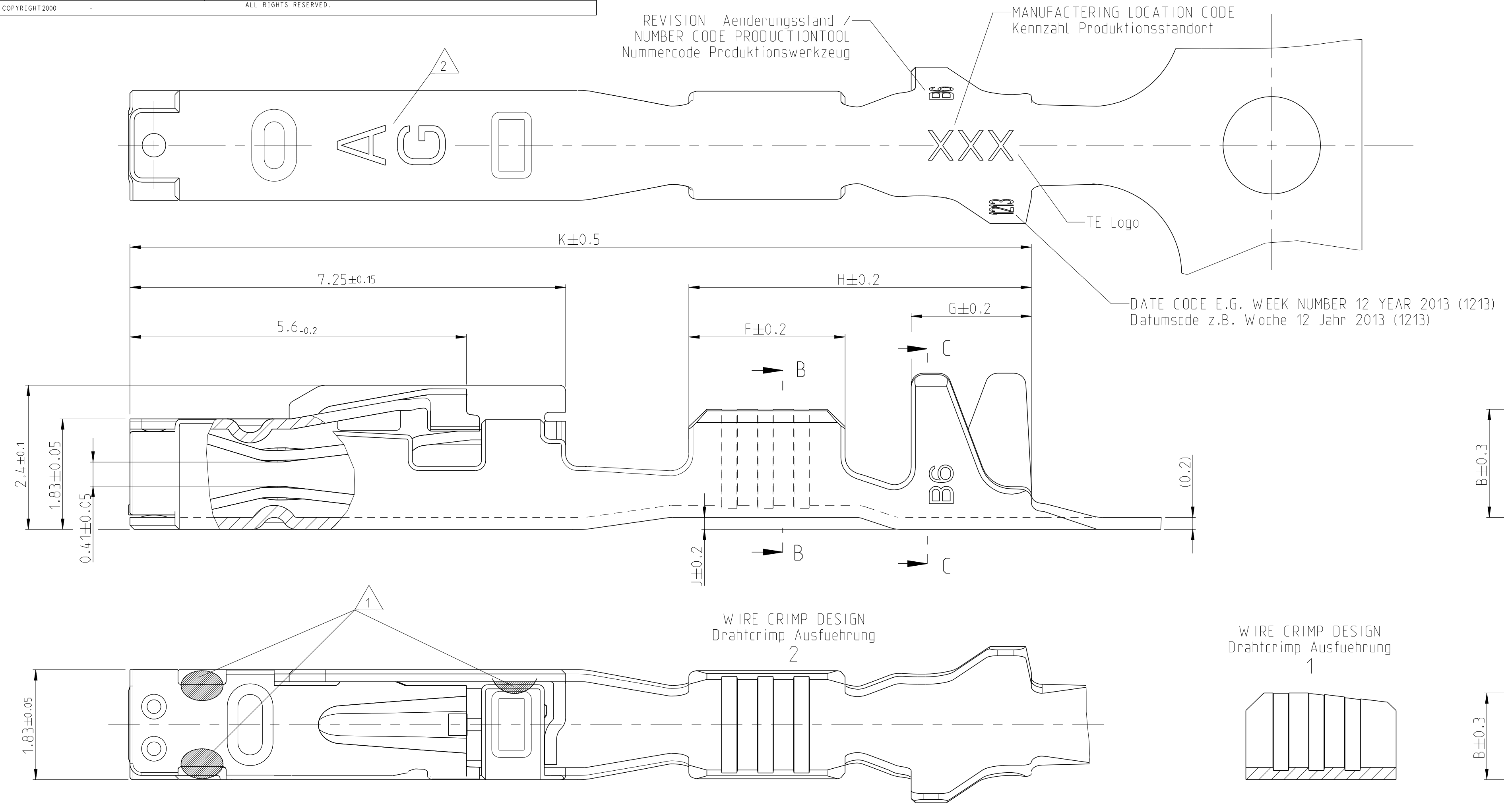


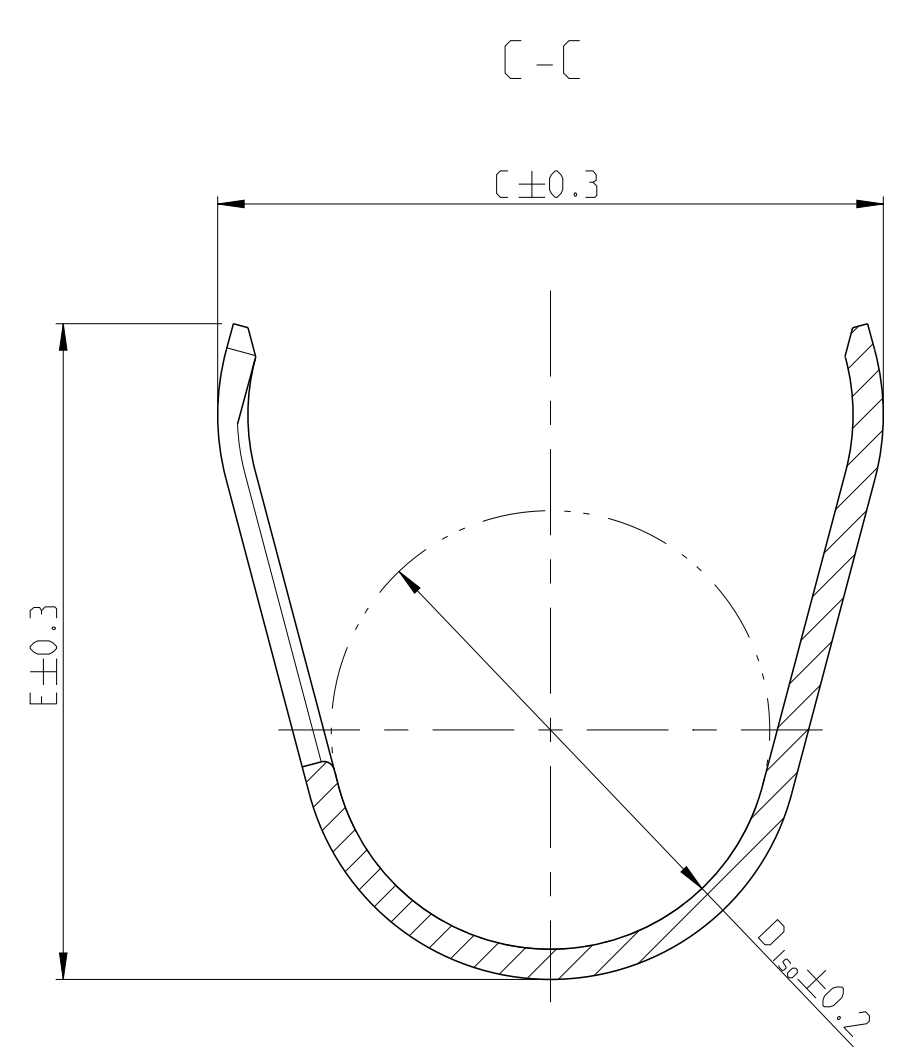
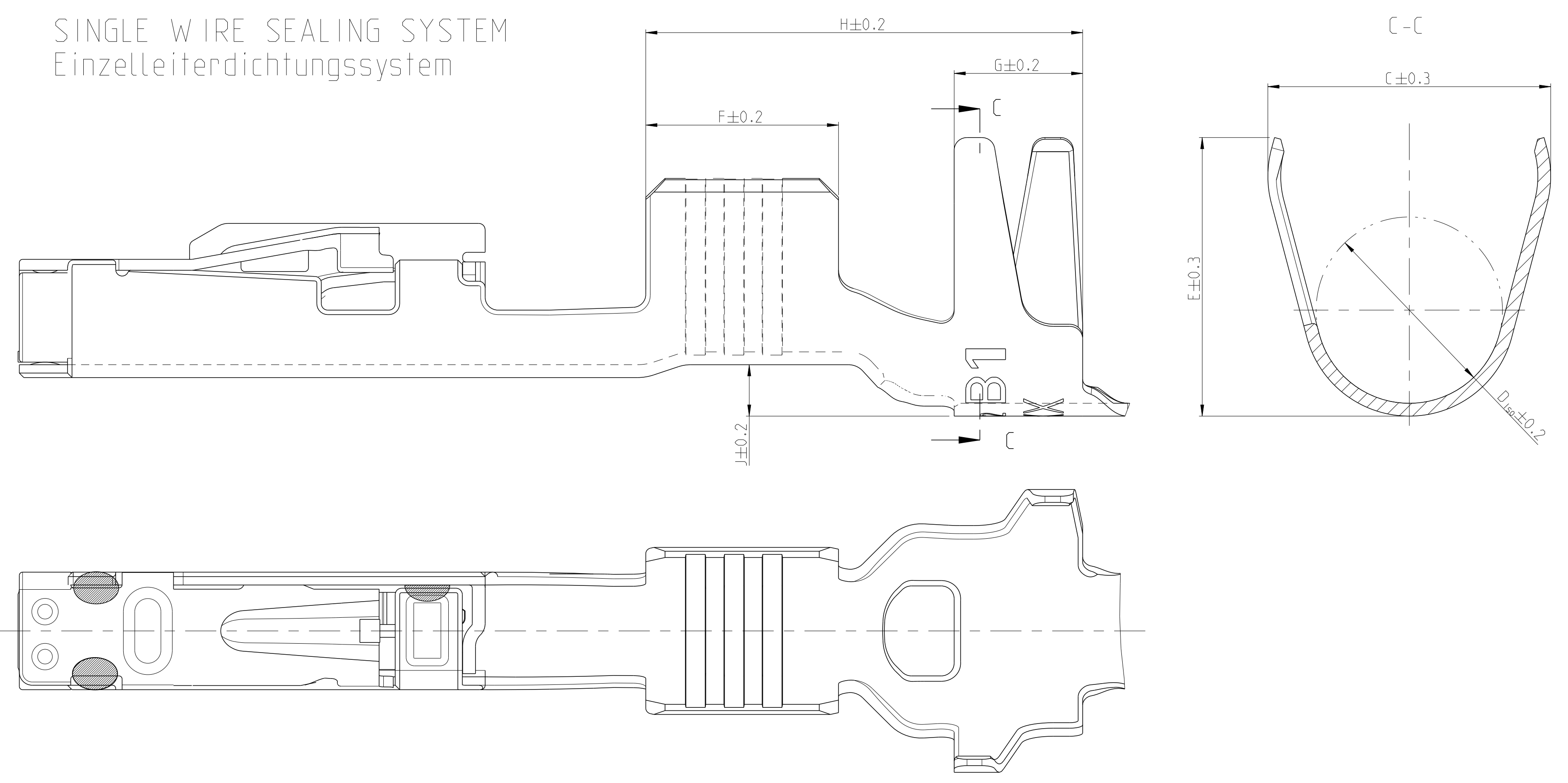
REVISION Aenderungsstand /
 NUMBER CODE PRODUCTIONTOOL
 Nummercode Produktionswerkzeug

MANUFACTURING LOCATION CODE
 Kennzahl Produktionsstandort

STANDARD APPLICATION
 Standard Anwendung

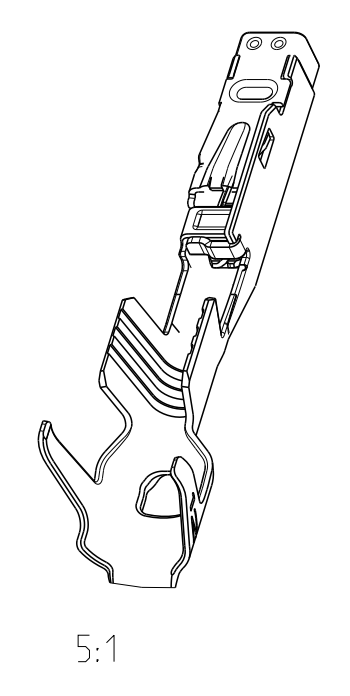


SINGLE WIRE SEALING SYSTEM
 Einzelleiterdichtungssystem



NOTES
 Bemerkungen

- 1 LASER WELDED
 Lasergeschweisst
- 2 STAMPED INDICATOR FOR PLATING:
 - AU GOLD PLATING
 - AG SILVER PLATING
 - TIN PLATING WITHOUT INDICATOR
 Markierung fuer galvanische Ausfuehrung:
 - AU vergoldet
 - AG versilbert
 - verzinkt: ohne Markierung
- 3 TO BE USED ON TAB
 1.2 ± 0.1 x 0.6 ± 0.03 mm
 geeignet fuer Flachstecker
 1.2 ± 0.1 x 0.6 ± 0.03 mm



THIS DRAWING IS A CONTROLLED DOCUMENT.		OWN E. Horn 11NOV2011	TE Connectivity													
DIMENSIONS: mm		CHK R. Meier 11NOV2011	NAME MCON 1.2 LL (LOCKING-LANCE)													
TOLERANCES UNLESS OTHERWISE SPECIFIED: mm		APVD V. Seipel 11NOV2011	SIZE A1													
<table border="1"> <tr> <td>PLC</td> <td>±0.2</td> </tr> <tr> <td>PLC</td> <td>±0.2</td> </tr> <tr> <td>PLC</td> <td>±0.2</td> </tr> <tr> <td>PLC</td> <td>±0.2</td> </tr> <tr> <td>ANGLES</td> <td>±1°</td> </tr> <tr> <td>FINISH</td> <td></td> </tr> </table>		PLC	±0.2	PLC	±0.2	PLC	±0.2	PLC	±0.2	ANGLES	±1°	FINISH		PRODUCT SPEC 108-18782	RESTRICTED TO	
PLC	±0.2															
PLC	±0.2															
PLC	±0.2															
PLC	±0.2															
ANGLES	±1°															
FINISH																
MATERIAL		APPLICATION SPEC 114-18464	SCALE 20:1													
WEIGHT 0.18 g		CAGE CODE 00779	SHEET 1 OF 2													
Customer Drawing		DRAWING NO C=1452674	REV C6													

LOC	DIST	REV	DATE	BY	CHK
A1	-	-	SEE SHEET 1	-	-

VERSION / Ausführung	REV.	RANGE Bereich	INSULATION-Ø Isolations-Ø [mm]	AWG	mm ²	BODY Kontakt-körper	SPRING Kontakt-feder	BODY Kontakt-körper	SPRING Kontakt-feder	DESIGN WIRE-CRIMP Ausführung Draht-Crimp	A	B	D _{Dr}	C	E	D _{ISO}	F	G	H	J	K	Ø3.55 [mm]	Ø3.95 [mm]	BLINDPLUG ORDER NO. B (indisoption Bestell-Nr.)	APPLICATION TOOLS Verarbeitungswerkzeuge			
SINGLE WIRE SEAL / Einzelzeichnung		214 1970-3	A	0.13-	0.95-	-	0.13																	967067-2	963142-2			
		214 1970-2	A	0.22	1.2	-	0.17																		967067-2	963142-2		
		214 1970-1	A	9		-	0.22																		967067-1	963142-2		
		7-1452665-3	A	0.25-	1.1-	-	0.25																		967067-2	963142-2	967056-1 for Ø 3.55 963143-1 for Ø 3.95 SEE APPLICATION SPEC. 114-18464 siehe Verarbeitungsspez. 114-18464	
		7-1452665-2	A			24	-																		967067-1	963142-2		
		7-1452665-1	A	0.35	1.75	-	0.35																		967067-1	963142-2		
		7-1452668-3	A	0.5-	1.4-	20	0.5																		967067-1	963142-2		
		7-1452668-2	A																						967067-1	963142-2		
		7-1452668-1	A	0.75	1.9	-	0.75																		967067-1	963142-2		
		7-1452671-3	A	1-	1.9-	18	-																		967067-1	967067-1		
		7-1452671-2	A			-	1																		OPTIONAL	963142-1		
		7-1452671-1	A	1.5	2.4	-	1.5																		-	963142-1		
STANDARD APPLICATION Standardanwendung		214 1861-3	A	0.13-	0.95-	-	0.13																	-	-	-		
		214 1861-2	A	0.22	1.2	-	0.17																	-	-	-		
		214 1861-1	A	9		-	0.22																	-	-	-		
		7-1452653-3	A	0.25-	1.1-	-	0.25																		-	-	-	
		7-1452653-2	A			24	-																		-	-	-	
		7-1452653-1	A	0.35	1.75	-	0.35																		-	-	-	
		7-1452656-3	A	0.5-	1.4-	20	0.5																		-	-	-	
		7-1452656-2	A																						-	-	-	
		7-1452656-1	A	0.75	1.9	-	0.75																		-	-	-	
		7-1452659-3	A	1-	1.9-	18	-																		-	-	-	
		7-1452659-2	A			-	1																		-	-	-	
		7-1452659-1	A	1.5	2.4	-	1.5																		-	-	-	

7-VARIANTS FOR NEW APPLICATIONS

NOTES

- 4 ONLY FOR FLR-WIRE SEE DIN 72551, PART 6 AND AWG WIRE ACCORDING DC-SPEC: MS-8288 ; MS-7889 ; MS-9532
Nur fuer FLR-Leitung nach DIN 72551, Teil 6 und AWG Leitung nach DC-SPEC: MS-8288 ; MS-7889 ; MS-9532
- 5 PRE TIN SnAg 1.0 TO 3.0µm
Vorverzinkt SnAg 1.0 bis 3.0µm
- 6 SPRING GOLD PLATED MIN. 0.8µm (only contact area)
Kontaktfeder galv. vergoldet min.0.8µm (nur Kontaktzone)
- 7 SPRING SILVER PLATED 2.0 TO 5.0µm (only contact area)
Kontaktfeder galv. versilbert 2.0 bis 5.0µm (nur Kontaktzone)
- 8 BODY PRE TIN Sn 1.0 TO 3.0µm
Kontaktkoerper vorverzinkt Sn 1.0 bis 3.0µm
- 9 REINFORCED WIRE ACCORDING TO LV 112-4
Zugverstaerkte Leitung nach LV 112-4

VERSION / Ausführung	REV.	RANGE Bereich	INSULATION-Ø Isolations-Ø [mm]	AWG	mm ²	BODY Kontakt-körper	SPRING Kontakt-feder	BODY Kontakt-körper	SPRING Kontakt-feder	DESIGN WIRE-CRIMP Ausführung Draht-Crimp	A	B	D _{Dr}	C	E	D _{ISO}	F	G	H	J	K	Ø3.55 [mm]	Ø3.95 [mm]	BLINDPLUG ORDER NO. B (indisoption Bestell-Nr.)	APPLICATION TOOLS Verarbeitungswerkzeuge				
SINGLE WIRE SEAL / Einzelzeichnung		0-1452665-3	B	0.25-	1.1-	-	0.25																	967067-2	963142-2	967056-1 for Ø 3.55 963143-1 for Ø 3.95 SEE APPLICATION SPEC. 114-18464 siehe Verarbeitungsspez. 114-18464			
		0-1452665-2	B			24	-																	967067-1	963142-2				
		0-1452665-1	B	0.35	1.75	-	0.35																		967067-1		963142-2		
		0-1452668-3	C	0.5-	1.4-	20	0.5																		967067-1		963142-2		
		0-1452668-2	C																						967067-1		963142-2		
		0-1452668-1	C	0.75	1.9	-	0.75																		967067-1		963142-2		
		0-1452671-3	B	1-	1.9-	18	-																		967067-1		967067-1		
		0-1452671-2	B			-	1																		OPTIONAL		963142-1		
		0-1452671-1	B	1.5	2.4	-	1.5																		-		963142-1		
	STANDARD APPLICATION Standardanwendung		0-1452653-3	B	0.25-	1.1-	-	0.25																	-		-	-	
			0-1452653-2	B			24	-																	-		-	-	
			0-1452653-1	B	0.35	1.75	-	0.35																	-		-	-	
		0-1452656-3	C	0.5-	1.4-	20	0.5																	-	-	-			
		0-1452656-2	C																					-	-	-			
		0-1452656-1	C	0.75	1.9	-	0.75																	-	-	-			
		0-1452659-3	B	1-	1.9-	18	-																	-	-	-			
		0-1452659-2	B			-	1																	-	-	-			
		0-1452659-1	B	1.5	2.4	-	1.5																	-	-	-			

0-VARIANTS SUPERSEDED BY 7-VARIANTS (SEE TABLE ON TOP) NOT FOR NEW APPLICATIONS

THIS DRAWING IS A CONTROLLED DOCUMENT.

OWN E. Horn 11NOV2011	TE Connectivity	
CHK R. Meier 11NOV2011		
APVD V. Seigel 11NOV2011		
DIMENSIONS: mm	TOLERANCES UNLESS OTHERWISE SPECIFIED: ±0.2	NAME MCON 1.2 LL (LOCKING-LANCE)
MATERIAL: -	FINISH: -	SIZE CAGE CODE DRAWING NO. RESTRICTED TO
Customer Drawing		A1 00779 ©=1452674 2 OF 2 REV C6